

~ ASHWELL ~



SCOOP

by hma

CLIMATE CRISIS!



DEFORESTATION!

Do you know our ice caps are melting? Do you know why the planet is heating up? Do you know why any of this climate change business is happening? Well, because of us...

Deforestation is where humans chop down trees to create a clearing for farming, that is used for production for supermarkets all over the world. In the clearing created by deforestation they far several things such as cattle, soya farming and planting palm oil trees. All three of these things are a part of many, and all three affect all the surrounding wildlife, but palm oil trees effect on species greatly. Orangutans.

In the clearings of miles and miles of palm oil trees was once a tropical lowland forest teeming with creatures. The tropical lowland forests supply the orangutans with the diet they require. Their diet consists of;

- Leaves
- Fruit
- Tree bark
- Bugs
- Honey
- Flowers
- Fungi

Even sometimes small mammals and bird eggs! In the past ten years the orangutan population has descended by 25%. There is only three quarters left of the population last recorded ten years ago. Due to deforestation and palm oil farming, 100,000 orangutan individuals have lost their

lives.



Furious FACTS!

DID YOU KNOW...?

Did you know that at least 15 billion trees are cut down every year?

Did you know that around 90% of worldwide deforestation is linked to agricultural expansion, this includes clearing the land for production use such as cattle farming and growing palm oil trees?

Did you know the Amazon rainforest produces around 54 petagrams of oxygen a year (16% of all oxygen produced on land).

Quiz Time

1. What 2 things do Orangutans only sometimes eat?
 - a. Leaves and honey
 - b. Fungi and small mammals
 - c. Small mammals and birds eggs
2. How many trees are chopped down every year?
 - a. 16 trillion
 - b. 15 billion
 - c. 1 million
3. What percentage of oxygen produced by land does the Amazon rainforest produce?
 - a. 75%
 - b. 94%
 - c. 16%
4. What percentage of deforestation is caused by agricultural farming?
 - a. 20%
 - b. 50%
 - c. 90%

By connie Birstead



Christmas Word Search

Find these words:

SANTA ELF SNOW TREE
GIFT BELLS ANGEL COCOA
REINDEER

R	E	I	N	D	D	E	E	R	T	S
A	N	G	E	L	F	G	I	A	F	O
S	N	O	W	W	C	O	C	O	A	L
T	R	E	E	G	E	L	L	S	S	N
A	E	L	F	R	E	S	S	A	T	W
B	S	A	N	T	A	G	R	E	E	E
A	N	G	E	L	S	N	O	W	B	E
R	E	I	N	D	E	E	R	D	E	L
S	T	A	R	L	S	S	N	O	W	B
N	O	E	L	R	E	I	N	D	E	E

CHILL AND

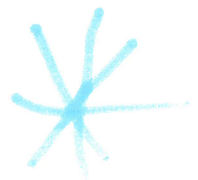
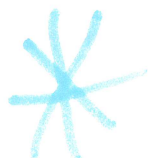
WEDNESDAY

LUNCHTIMES
CHILL

Ashwell primary school

We are here to help you and
make sure your ~~own~~ feelings aren't
bottled up.

 Merry
Christmas



MONSTER

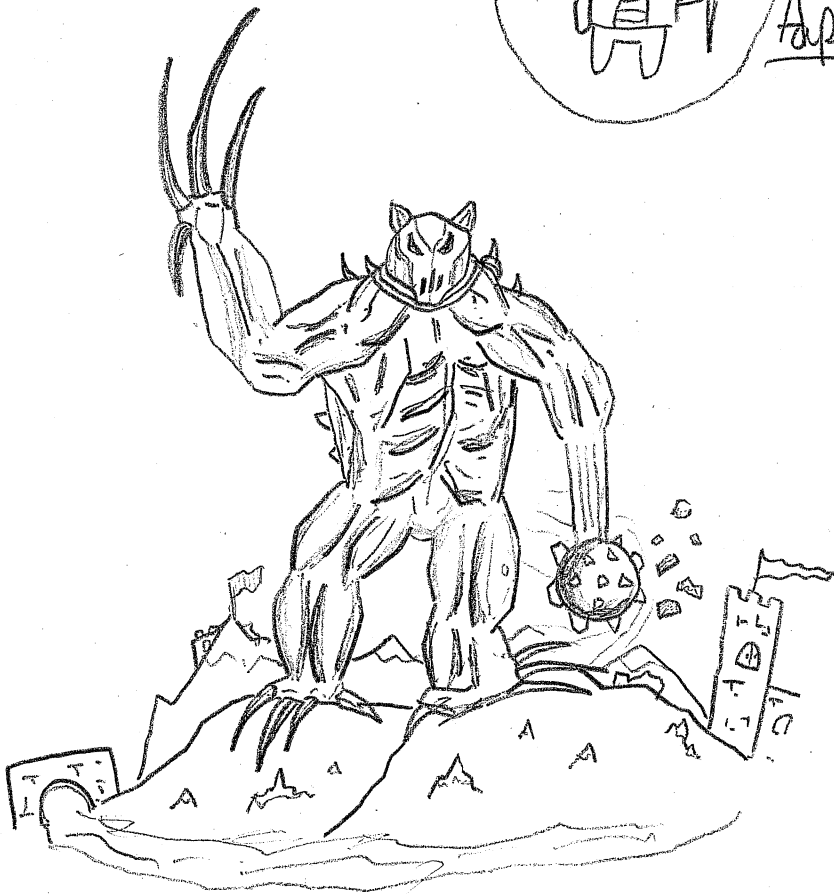
The month

week 1

by Toby



Apex bear



strength 9/10

danger 7/10

rarity 5/10

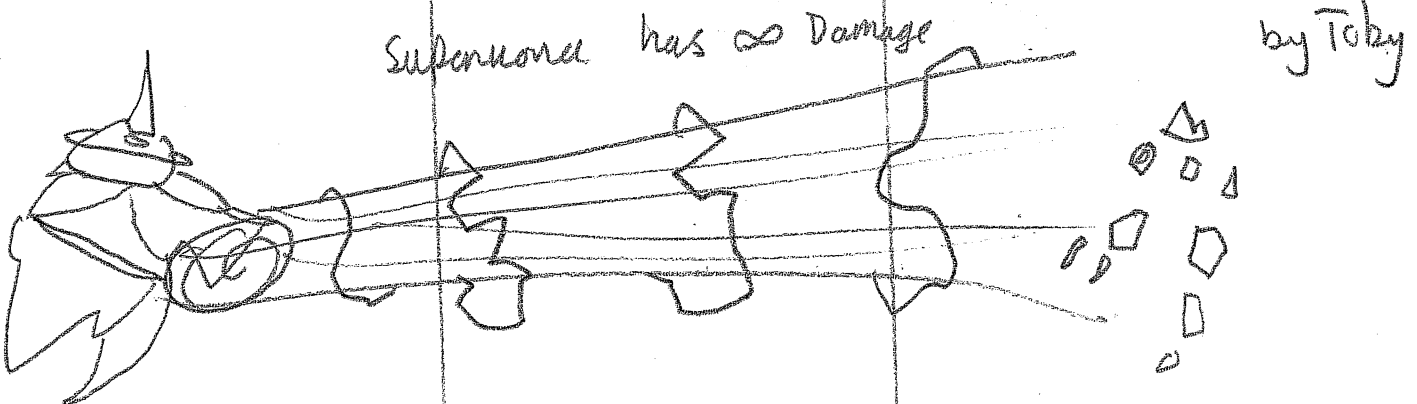
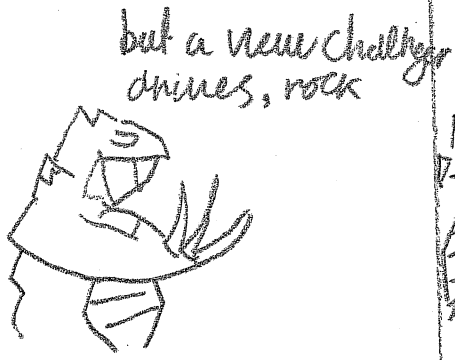
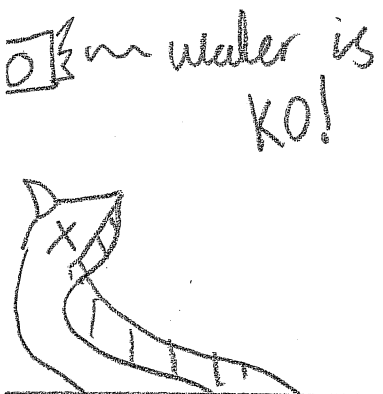
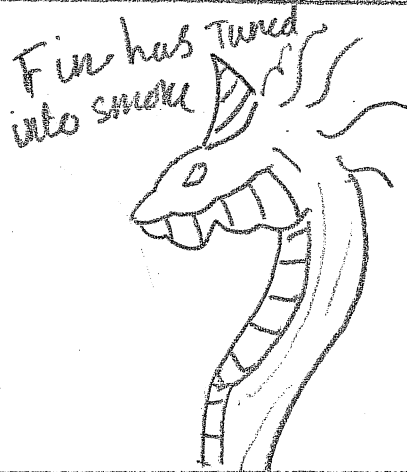
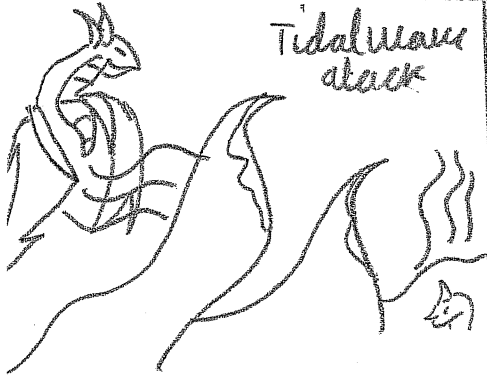
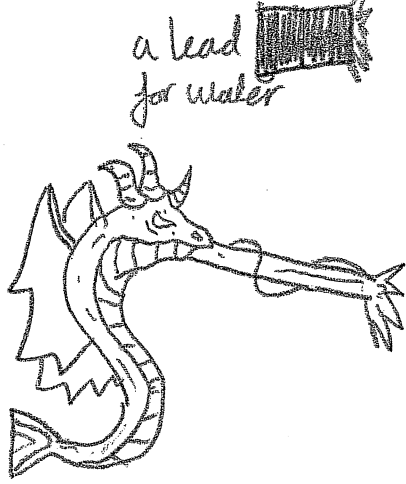
size 7/10

speed 4/10

This monster is a destructive bear like beast that ransacks in mountains destroying castles

Dragon Fights

water vs fire

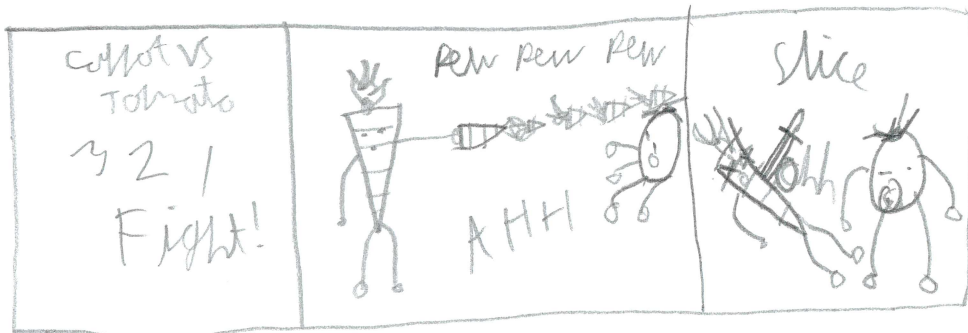


Comics of the Month

by Callum ~~cheesy~~ Tokens

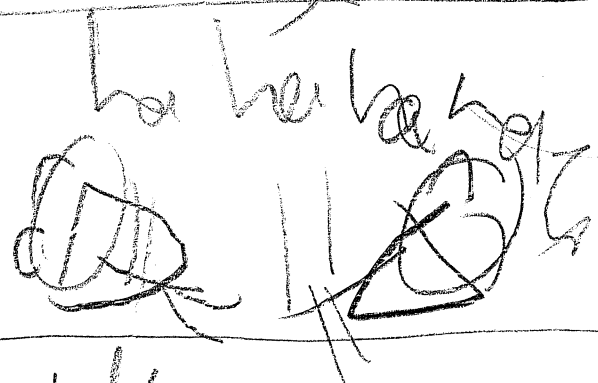
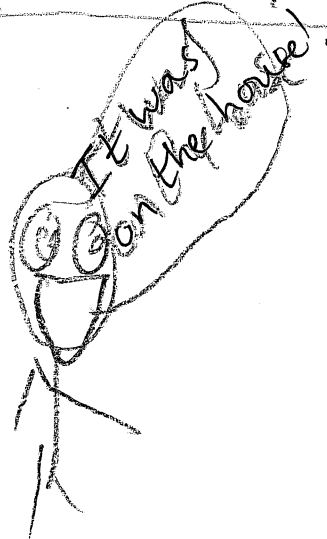
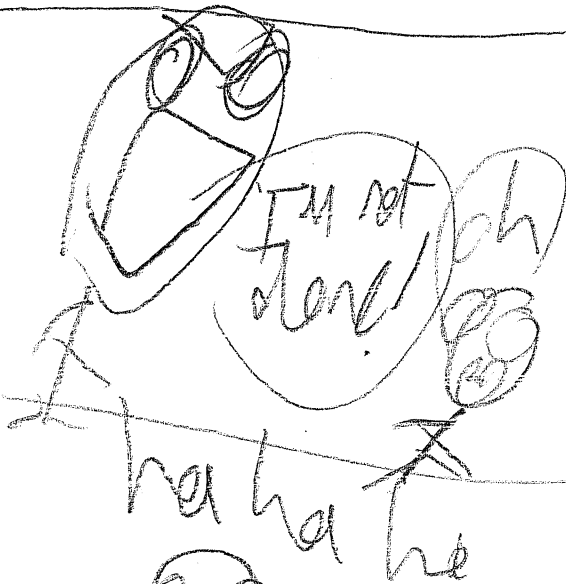
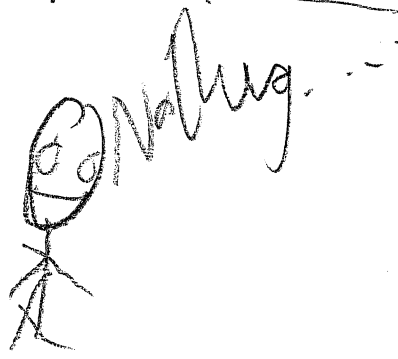
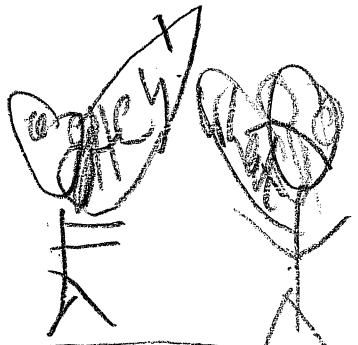


Food wars



Character of the month



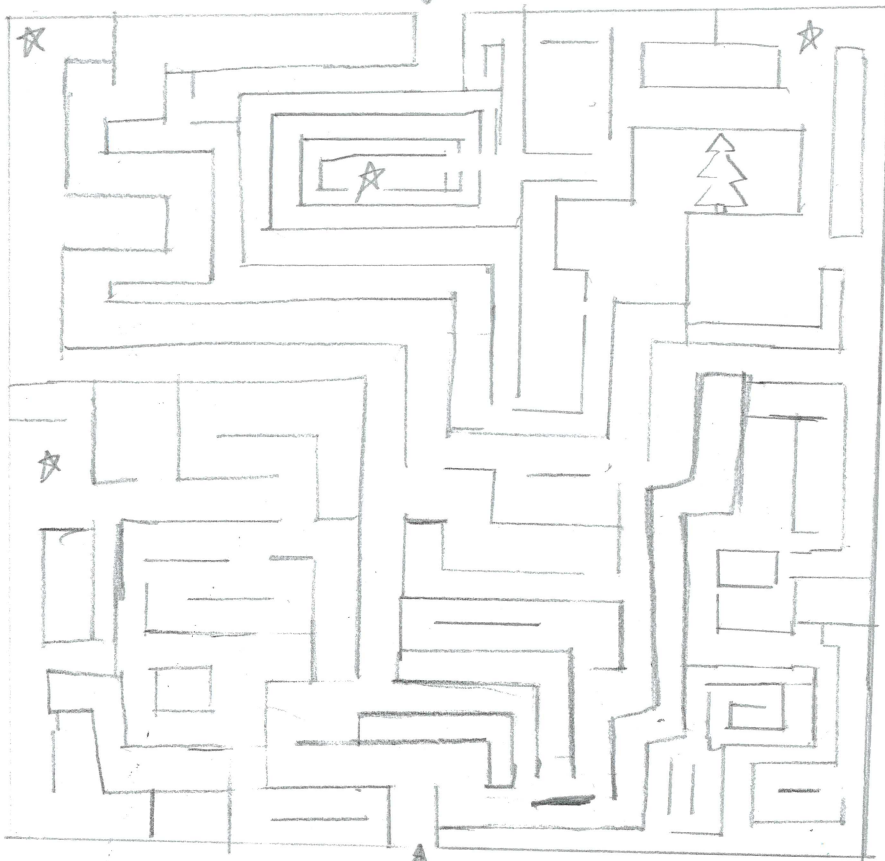


by Tom Edmund chiz

Puzzle of the month

By Jordan

Finish



Start



Who will never be
hungry at Christmas?

Answer: A stuffed turkey!