



## Policy Document

<b>Policy Document</b>	
Subject	<b>Complaints Policy</b>
Approval Date October 2023	Review Date October 2024
Signed by:	Written by: School
Name:	S.England
Role:	Headteacher

## Ashwell Primary School Complaints Policy

### HOW TO COMMENT OR COMPLAIN

#### **Who can make a complaint?**

This complaints procedure is not limited to parents or carers of children that are registered at the school. Any person, including members of the public, may make a complaint to Ashwell Primary School about any provision of facilities or services that we provide. Unless complaints are dealt with under separate statutory procedures (such as appeals relating to exclusions or admissions), we will use this complaints procedure.

#### **We care about what you think**

#### **The difference between a concern and a complaint**

We define a concern as '*an expression of worry or doubt over an issue considered to be important for which reassurances are sought*'.

We define a complaint as '*an expression of dissatisfaction however made, about actions taken or a lack of action*'.

It is in everyone's interest that concerns and complaints are resolved at the earliest possible stage. Many issues can be resolved informally, without the need to use the formal stages of the complaints procedure. Ashwell School takes concerns seriously and will make every effort to resolve the matter as quickly as possible.

If you have difficulty discussing a concern with a particular member of staff, we will respect your views. In these cases, the Headteacher, will refer you to another staff member. Similarly, if the member of staff directly involved feels unable to deal with a concern, the Headteacher will refer you to another staff member. The member of staff may be more senior but does not have to be.

The ability to consider the concern objectively and impartially is the most important factor. We understand however, that there are occasions when people would like to raise their concerns formally. In this case, Ashwell School will attempt to resolve the issue internally, through the stages outlined within this complaints procedure.

Ashwell School takes all complaints made against it, its staff and Governors seriously and undertakes to investigate them in a fair and equitable manner and in accordance with this policy document.

Each day this school makes many decisions and tries hard to do the best for all the children. Your comments - either positive or negative - are helpful for future planning. You may want to talk to us about a particular aspect of this school, though not actually make a complaint - you just want to get something 'off your chest'.

If you are dissatisfied about the way your child is being treated, or any actions or lack of action by us, please feel free to contact us using the details listed above.

#### **Our aims**

- Your complaint will be dealt with honestly, politely and in confidence.
- Your complaint will be looked into thoroughly and fairly.
- We will keep you up to date with progress at each stage.
- You will get an apology if we have made a mistake.
- You will be told what we are going to do to put things right.
- You will get a full and clear written reply to formal complaints within 28 school days (5½ weeks).

## **Scope of this Complaints Procedure**

This policy and procedure only applies to complaints about the provision of facilities or services by Ashwell School.

Some examples of issues that may be complained about are as follows:

- Complaints from individuals, including members of the public, about the provision of facilities or services by the School.
- Issues from parents or carers of children who attend the School.
- Complaints regarding pupil welfare and wellbeing.
- Complaints regarding bullying.
- Complaints regarding staff behaviour.
- A Governor complaining about a member of Staff.
- A member of Staff complaining about a Governor.
- A Governor complaining about another Governor.
- Complaints about the School's handling of a Subject Access Request (SAR) or a Freedom of Information (FOI) Request.

The following matters cannot be dealt with as a formal complaint:

- Complaints about pupil behaviour outside of School hours, e.g. weekends and holiday periods – such issues are not the School's responsibility.
- Complaints regarding third parties using or hiring School premises – third party providers should have their own complaints process and you should contact them directly.
- Complaints about the School carrying out a statutory duty, e.g. making a Child Protection referral – the School's complaints process cannot be invoked to stop it from doing something it has a duty to do.
- Matters likely to require a Child Protection Investigation – Complaints about Child Protection matters are handled under the School's Child Protection and Safeguarding Policy and in accordance with relevant statutory guidance.
- A member of staff complaining about another member of staff – refer to the School's Internal Grievance Procedures.
- A member of staff complaining about an action or a decision of the School's Full Governing Body - the Governing Body will have already given the matter full consideration.
- Whistleblowing – refer to the School's Internal Whistleblowing Procedure for all employees, including temporary staff and contractors. The Secretary of State for Education is the prescribed person for matters relating to education for Whistleblowing in education who do not wish to raise matters directly with their employer. Referrals can be made at [www.education.gov.uk/contactus](http://www.education.gov.uk/contactus)
- Complaints regarding internal management decisions, e.g. Class and Teacher Allocations and School Session Time changes.
- National Curriculum content – contact the Department for Education at [www.education.gov.uk/contactus](http://www.education.gov.uk/contactus)
- Complaints about a decision or process that has been subject to a full consultation and subsequently approved by the Full Governing Body – the Governing Body has already given the matter full consideration and respondents have had the opportunity through the consultation process to put forward their views.
- Unsuccessful School admission applications – may ultimately be appealed to an Independent Appeal Panel.
- Complaints about Fixed-Term or Permanent Exclusions – Permanent Exclusions may ultimately be appealed to an Independent Review Panel (IRP). For Fixed Term Exclusions, representations can be made to the Chair of Governors outside the provisions of the complaints process.

If other bodies are investigating aspects of the complaint, for example the police, local authority (LA) safeguarding teams or Tribunals, this may impact on our ability to adhere to the timescales

within this procedure or result in the procedure being suspended until those public bodies have completed their investigations.

If a complainant commences legal action against Ashwell School in relation to their complaint, we will consider whether to suspend the complaints process until the legal proceedings have concluded. The School will only consider investigating the complaint after the conclusion of legal proceedings if those proceedings did not address the issues at the heart of the complaint.

### **How to make a complaint**

A concern or complaint can be made in person, in writing or by telephone. They may also be made by a third party acting on behalf of a complainant, provided that the third party is able to demonstrate to the School that they have the appropriate consent to do so.

Complainants should not approach individual governors to raise concerns or complaints. They have no power to act on an individual basis and it may also prevent them from considering complaints at Stage 2 of the procedure. In the event that a Governor is approached by a complainant, they should signpost the complainant back to the most appropriate person.

Complaints against school staff (except the Headteacher) should be made in the first instance, to the Headteacher via the school office. Please mark them as Private and Confidential.

Complaints that involve or are about the Headteacher or any other governors, should be addressed to the Chair of Governors, via the school office. Please mark them as Private and Confidential. The School Office will ensure that the Chair of Governors receives this promptly.

Complaints about the Chair of Governors, or the whole governing body should be addressed to the Clerk to the Governing Body, via the school office. Please mark them as Private and Confidential. The School Office will ensure that the Clerk to the Governors receives this promptly.

For ease of use, a template complaint form has been included within this complaints policy and procedure (Appendix 2). If you require help to complete the form, you should contact the School Office. You can also ask third party organisations like the Citizens Advice Bureau or an Independent Advocate to help you. Ashwell School will ensure that all formal complaints are documented in writing to ensure that the issues being complained about and the complainant's desired outcomes are clear. Complainants will be asked to submit their complaint by completing the School's formal complaint form.

In accordance with equality law, as outlined above, the School will consider making reasonable adjustments if required, to enable complainants to access and complete this complaints process. This includes providing information in alternative formats, assisting complainants in raising a formal complaint or holding meetings in accessible locations.

If a complainant is unable to submit their complaint in writing, the School will ensure that the issues being complained about and the outcomes being requested are documented in writing. The School may do this in either of the following ways:

- Invite the complainant to a meeting with the Headteacher or Chair of Governors (depending on what stage the complaint has reached) and a Notetaker. The Notetaker will document the issues being complained about and the complainant's desired outcomes, as discussed and agreed during the course of the meeting. At the end of the meeting, the complainant will be given a copy of the notes of the meeting containing this information and the School will retain the original copy for the purpose of investigating the complaint(s).
- Signpost the complainant to independent support, including Advocacy. Advocates provide qualified, independent support for people that have difficulty understanding information and advice or who would like support in communicating their views. Advocates can help

complainants to formulate their complaint and then submit it on their behalf and support them through the complaints process. POhWER was founded in Hertfordshire in 1996. They deliver services in Hertfordshire as part of the HertsHelp service, in partnership with a wide range of voluntary sector organisations, including Advocacy. It is a free and impartial service. Their contact details are as follows:

POhWER

Telephone: 0300 456 2370

Text: send the word 'pohwer' with your name and number to 81025

Email: [pohwer@pohwer.net](mailto:pohwer@pohwer.net)

Skype: pohwer.advocacy

Post: PO Box 14043, Birmingham, B6 9BL

### **Anonymous complaints**

Ashwell School will not normally investigate anonymous complaints. In such instances, the Headteacher and/or the Chair of Governors will determine whether the complaint warrants an investigation and will ensure that this is completed, if so. The outcome of the investigation cannot be shared with the complainant, as the School will not know who they are and therefore, the School cannot ascertain whether or not the person is entitled to have confidential information regarding the complaint investigation shared with them.

### **Timescales**

All complaints must be raised within three months of an incident or event. Where a series of associated incidents have occurred, the complaint must be raised within three months of the last of these incidents. Ashwell School will consider exercising the discretion to consider matters raised outside of this timeframe, only if the School deems that exceptional circumstances apply. To enable the School to make this decision, the complainant will be asked to explain their reasons as to why they have taken longer than three months to raise their complaint. If the complainant does not provide any explanation or the School deems that the explanation given is not compelling or exceptional enough to warrant the issue(s) being investigated as a late complaint, the School will confirm this in writing and take no further action.

### **Complaints received outside of term time**

Ashwell School will consider any complaints made outside of term time to have been received on the first School day after the holiday period. The School will send the complainant an acknowledgement of their complaint, confirming the date of receipt, what will happen next and the timescale that applies. This will differ depending on what stage of the complaints process has been reached.

### **Resolving complaints**

At each stage of this process, Ashwell School will aim to resolve the complaint. If appropriate, we will acknowledge that the complaint is upheld, in whole or in part. In addition, we may offer one or more of the following if it is deemed appropriate and necessary:

- An explanation.
- An admission that the situation could have been handled differently or better.
- An assurance that we will try to ensure the event(s) complained of will not recur.
- An explanation of the steps that have been or will be taken to help ensure that it will not happen again and an indication of the timescales within which any changes will be made.
- An undertaking to review relevant School policies in light of the complaint.
- An apology.

### **Withdrawal of a Complaint**

If a complainant wishes to withdraw their complaint, they must inform the School. Ashwell School will ask them to confirm this in writing. If they are unable to do this however, the School will write to them to confirm that their complaint has been withdrawn, in accordance with their wishes.

### **In the first instance – Informal stage**

If you have a concern about anything we do, or if you wish to make a complaint, you can do this by telephone, in person or in writing (by letter or email). We hope that most complaints can be settled quickly and informally, either by putting matters right or by giving you an explanation. If there is something you are not happy about, or you don't understand why we are doing something in a particular way, please come in and discuss it with the class teacher or another appropriate member of staff, such as the Special Educational Needs Co-ordinator (SENCo) if it is about Special Needs.

We know that it can feel uncomfortable to question or challenge something, but if you don't tell us what is worrying you we cannot explain what we are doing or try to put it right. If the member of staff you speak to in the first instance is unable to attempt to resolve the matter, you should make an appointment with the Headteacher. You should be able to sort out your worries but sometimes this is not possible. In this case there is a next step.

### **Stage 1 - Formal Complaint**

Formal complaints must be made to the Headteacher in the first instance (unless the complaint is about the Headteacher) via the School office. If you are unable to submit your complaint in writing by email or letter or by using the formal complaint form, the School will follow the steps set out on pages 4 and 5 of this policy and procedure, by offering to meet you and/or signposting you to a free and impartial Advocacy and Support Service.

The Headteacher will record the date the complaint was received and will acknowledge receipt of the complaint in writing (either by letter or email) within 3 School days.

Within this response, the Headteacher will seek to clarify the nature of the complaint, ask what remains unresolved and what outcome(s) the complainant would like to see. The Headteacher will consider whether a face to face meeting is the most appropriate way of doing this. The Headteacher can delegate the investigation of the complaint to another member of the School's Senior Leadership Team, but not the decision(s) to be taken.

During the investigation, the Headteacher (or Investigator) will:

- Interview those involved in the matter and/or those complained of, allowing them to be accompanied if they wish. The decision in terms of who should be interviewed and how is up to the Headteacher (or Investigator).
- Keep a written record of any meetings or interviews in relation to their investigation.

Once the investigation has been concluded, the Headteacher will provide a formal written response within 10 School days from the date of receipt of the complaint. If the Headteacher is unable to meet this deadline for whatever reason, they will provide the complainant with an update and a revised response date.

The response will detail the actions taken to investigate the complaint and will provide a full explanation of the decision(s) made and the reasoning behind them.

Where appropriate and possible, the response will include details of actions Ashwell School will take to hopefully resolve the complaint.

The Headteacher will advise the complainant how they may escalate their complaint should they remain dissatisfied with the outcome of Stage 1.

If your complaint is about the Headteacher, you should write to the Chair of Governors. **Please ensure that this is sent directly to [Chairofgovs@ashwell.herts.sch.uk](mailto:Chairofgovs@ashwell.herts.sch.uk)** and titled Private and Confidential.

If the complaint is about a member of the Governing Body (including the Chair or Vice-Chair of Governors), a suitably skilled Governor will be appointed to complete all of the required actions at Stage 1 as set out above.

Complaints about the Headteacher or a member of the Governing Body must be made to the Clerk, via the School Office.

If the complaint is:

- jointly about the Chair and Vice Chair of Governors,
- the majority of the Governing Body or
- the entire Governing Body,

Stage 1 will be considered by an Independent Investigator appointed by the Clerk to the Governing Body. This person could be a Governor from another School. At the conclusion of their investigation, the Independent Investigator will provide a formal written response to the complainant.

**If the complainant is dissatisfied with the Stage 1 response to any complaint, they have 10 School days in which to request escalation to Stage 2 of the complaints process.**

**Escalation requests made outside of this timeframe do not have to be accepted.**

If the request is late, the complainant will be asked to explain why they have taken longer than 10 School days to request escalation of their complaint to the next stage. If the complainant does not provide any explanation or the School deems that the explanation given is not compelling or exceptional enough to warrant accepting the escalation request out of timescale, the School will confirm this in writing and take no further action.

## **Stage 2 - Governors Complaint Panel Hearing**

If the complainant is dissatisfied with the outcome at Stage 1 and wishes to take the matter further, they can escalate the complaint to Stage 2 – where the complaint is heard by a Panel of Governors. The Panel is comprised of 3 impartial Governors, usually from the School's Governing Body. In exceptional circumstances however, a decision may be taken to use Governors from other Schools to make up the Panel. **Stage 2 is the final stage of the School's complaints process.**

**A request to escalate to Stage 2 must be made to the Chair of Governors, using the official form (Appendix 2) and emailed to [Chairofgovs@ashwell.herts.sch.uk](mailto:Chairofgovs@ashwell.herts.sch.uk)**, within 10 school days of receipt of the Stage 1 response.

*(The complaints form is available in a word document on the school website)*

The Chair of Governors (or the Clerk) will record the date the Stage 2 escalation request is received and acknowledge receipt of the complaint in writing (either by letter or email) within 3 school days.

Requests received outside of this timeframe will only be considered if the School deems that exceptional circumstances apply. Stage 2 will only consider complaints that have already been lodged and investigated at Stage 1. **It is not an opportunity to raise new complaints.** Any complainant wishing to do so must first complete Stage 1 of the School's complaints process.

The Chair of Governors (or the Clerk) will write to the complainant to inform them of the date of the Stage 2 Complaints Panel Hearing. They will aim to convene a Panel within 20 School days of receipt of the Stage 2 request. If this is not possible, they will provide an anticipated date and keep the complainant informed.

If the complainant rejects the offer of three proposed dates and without good reason, the Chair of Governors (or the Clerk) will decide when the Panel Hearing will be. It is permitted to proceed in the complainant's absence on the basis that the Panel will consider all written submissions from both parties.

The Stage 2 Complaints Panel Hearing will consist of at least three Governors with no prior involvement or knowledge of the complaint. Prior to the meeting, they will decide amongst themselves who will serve as the Chair of the Panel. If there are fewer than three Governors from Ashwell School available (for example due to sickness or other prior commitments), the Chair of Governors (or the Clerk) will source any additional, impartial Governors through another local School or through the Local Authority's Governor Services Unit, in order to make up the committee. On some occasions, a Panel comprised entirely of external Governors may be convened to hear the complaint at Stage 2. This will depend on the circumstances of the complaint and the decision will be made by the Chair of Governors (or the Clerk).

The Complaints Panel will decide whether to deal with the complaint by inviting parties to a meeting or through written representations, but in making their decision they will be sensitive to the complainant's needs. The Hearing may take place with both parties present or attending separately at different times. Once again, this will depend on the circumstances of the complaint.

Both parties (i.e. the complainant and the respondent on behalf of the School) may bring someone along with them to provide support. This could be a friend, relative or independent supporter. Generally, whilst not prohibited, we do not encourage either party to bring Legal Representatives to the Panel Hearing as it is not a Court of Law and cross questioning is not permitted. All questioning throughout the Hearing is conducted by the Panel. Witnesses, including members of staff, may be invited to give evidence during the course of the Panel Hearing. They may also bring someone along with them to provide support, such as a friend, relative or independent supporter.

If a complaint is made regarding the behaviour or conduct of a member of staff and it is upheld in full or in part, this may result in some form of disciplinary action taking place. Where this is the case, complainants will be informed that the matter will be progressed through Staff Disciplinary Procedures, if appropriate, but the outcome(s) cannot be shared with them as this information is confidential between the employer and employee.

Representatives from the media are not permitted to attend a Stage 2 Complaints Panel Hearing.

At least 14 School days before the meeting, the Chair of Governors (or the Clerk) will:

- Confirm and notify the complainant (and the respondent on behalf of the School) of the date, time and venue of the Panel Hearing. Every effort should be made to try and ensure that that Hearing date and time is convenient for both parties and that the venue and proceedings are accessible. Please note however, that if the complainant rejects the offer of three proposed dates and without good reason, the Chair of Governors (or the Clerk) will decide when the Panel Hearing will be and it is permitted to proceed in the complainant's absence on the basis that the Panel will consider all written submissions from both parties. Similarly, if either party elects to leave the Hearing before it has finished, it is permitted to continue in their absence.
- Request copies of any further written material to be submitted to the Panel at least 7 School days before the meeting. Late evidence will not be accepted.

Any written material submitted will be circulated to all parties at least 5 School days before the date of the Hearing. The Complaints Panel will not normally accept as evidence audio or video



recordings of conversations that were obtained covertly and/or without the informed consent of all parties being recorded.

The Complaints Panel will not review any new complaints at this stage or consider evidence unrelated to the initial complaint that may have been included. Any new complaints must be dealt with at Stage 1 of the complaints process first.

The Stage 2 Complaints Panel Hearing will be held in private. Electronic recording of the Hearing is not normally permitted unless a complainant's own disability or special needs require a reasonable adjustment to be made. Complainants cannot insist on a Hearing being recorded without good reason. Prior knowledge and consent of all parties attending must be sought and obtained before recording of the Hearing can take place. Any request to audio or video record the meeting and whether this was consented to or not by all parties present should be documented in the Clerk's detailed notes of the Hearing. The final decision as to what reasonable adjustments will be made, if any, rests with the school.

The Stage 2 Complaints Panel will consider the complaint and all of the evidence presented by both parties. The Panel can:

- Uphold the complaint in full or in part.
- Reject the complaint in full or in part.
- Make a finding of No Judgement if there is insufficient evidence to reach a definitive conclusion.

If the complaint is upheld in full or in part, the Stage 2 Complaints Panel will:

- Decide on the appropriate action to be taken to try and resolve the complaint.
- Where appropriate, recommend changes to the School's systems or procedures to prevent the same or similar issues happening in the future.

The Chair of the Panel will provide the complainant and the respondent on behalf of the School with a full explanation of their decision and the reason(s) for it, in writing, within 5 School days of the Hearing.

The outcome letter to the complainant (and copied to the respondent on behalf of the School) will include details of how to contact the Department for Education if they are dissatisfied with the way their complaint has been handled by Ashwell School.

If the complaint is:

- jointly about the Chair and the Vice Chair of the Governing Body or
- the majority of the Governing Body or
- the entire Governing Body,

Stage 2 will be heard by a Panel of Independent Governors.

The response will detail any actions taken to investigate the complaint and provide a full explanation of the decision(s) made and the reason(s) for them. Where appropriate, it will include details of actions Ashwell School will take to try and resolve the complaint and to prevent the same issues from recurring.

The response will also advise the complainant how to escalate their complaint should they remain dissatisfied.

**Governor Review - Complaints where a child no longer attends the School and is no longer on roll**

The purpose of this complaints process is to ensure that if an error has been made, or an injustice has occurred, action can be taken to try and provide a remedy. Where the complainant has removed their child from the School, it is impossible for the School to provide a remedy that will directly benefit them or their child.

However, as the Governing Body has a duty of care to pupils who remain on roll, where a child has left the School, it will ensure that the circumstances of any complaint made are reviewed so that the Governing Body is satisfied that the School had acted appropriately and that the relevant policies and procedures had been followed correctly.

Under this policy and procedure, where a child no longer attends the School and their name has been removed from the School roll, the Chair of Governors has the discretion to commission a Stage 2 Governor Review instead of a Stage 2 Complaints Panel. The Chair of Governors will choose one of the two options, to ensure that the complaint is investigated appropriately and that the complaints process can be concluded, however, the final decision as to which option they choose is entirely at their discretion.

If a decision is taken to commission a Stage 2 Governor Review instead of a Stage 2 Complaints Panel Hearing, the Chair of Governors will appoint a Governor who has had no prior involvement in the complaint to undertake this. If a Governor cannot be appointed from the School's own Governing Body (for example due to sickness or other prior commitments), the Chair of Governors will appoint an independent Governor from another local School or through the Local Authority's Governor Services Unit.

Once a Governor has been appointed, they will review the original complaint, the Stage 1 Investigation and response, the complainant's reply to the Stage 1 response (including their escalation request) and any further evidence the complainant has submitted (this must relate to the complaint and cannot be in relation to new matters).

When the review is complete, either the Chair of Governors or the Governor who conducted the review will write to the complainant to inform them whether the complaint has been upheld or rejected, in full or in part, and of any changes to practice and procedures which have been agreed by the Governing Body.

### **Further recourse**

#### **Special Educational Needs provision complaints**

If your complaint is about the way the School has been delivering the provision set out in Section F of your child's Education, Health and Care Plan (EHCP), you may complain further to the Local Authority that maintains your child's EHCP.

If the EHCP is maintained by Hertfordshire County Council, you may complain further by setting out the detail of your complaint and sending it to:

Customer Service Team – Complaints  
Postal Point: CHO118  
Resources Department  
County Hall  
Hertford  
SG13 8DF  
Email: [cs.complaints@hertfordshire.gov.uk](mailto:cs.complaints@hertfordshire.gov.uk)

Once in receipt of your complaint, the Complaints Manager for Children's Services will ensure that the Local Authority completes a Section F Provision Checklist. This process entails a Provision Checklist being drawn up directly from Section F of the EHCP. A Senior SEND Officer will then visit the School in order to work through the checklist point by point and complete it. The Senior

SEND Officer will seek the comments of the Headteacher, Senior Leadership Team, SENCo and Governors as appropriate, as well as any other information or advice that they deem necessary.

Once the Provision Checklist has been completed, the Local Authority will notify the complainant of the outcome in writing, enclosing a copy of the checklist. A copy of the outcome letter and Checklist will also be sent to the School for its information and record keeping. This process will take up to 25 working days (of the Local Authority) to conclude.

Complainants who remain dissatisfied following further investigation of their Special Educational Needs provision complaint by the Local Authority may complain to the Secretary of State who may decide to conduct an additional investigation. The contact details for the Secretary of State are set out below.

### **Complaints of any other nature**

If the complainant believes that the School did not handle their complaint correctly in accordance with this complaints policy and procedure or that it acted unlawfully or unreasonably in exercising its duties under education law, they can approach the Department for Education (DFE) after they have exhausted the School's complaints process at Stage 2.

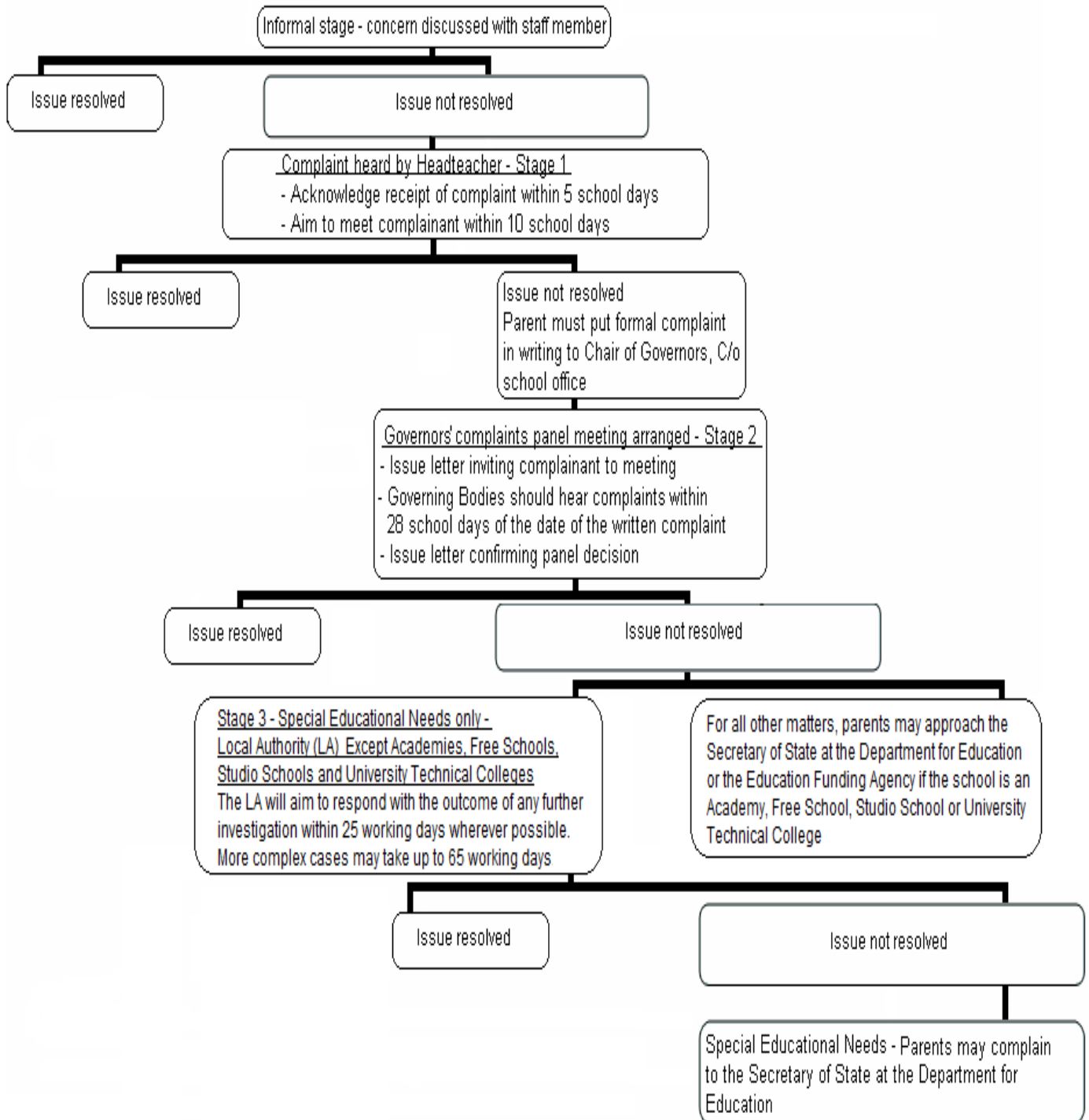
The DFE will not normally re-investigate the substance of a complaint or overturn any decisions made by a school. They will consider whether the School has adhered to education legislation and any statutory policies relevant to the complaint. The DFE will not substitute its decision for that of the Stage 2 Complaints Panel simply because the complainant disagrees with it.

The complainant can refer their complaint to the Secretary of State at the Department for Education online at [www.education.gov.uk/contactus](http://www.education.gov.uk/contactus), by telephone on 0370 000 2288 or by writing to:

Department for Education  
Piccadilly Gate  
Store Street  
Manchester  
M1 2WD

## Dealing with complaints

The Education Act 2002 requires all schools to have a complaints procedure that has been approved by the Governing Body and publicised to parents.



## **Appendix 1**

### **Roles and Responsibilities**

#### **Complainant**

The complainant should:

- Explain their complaint in full as swiftly as possible.
- Co-operate fully with the School to try and resolve the complaint.
- Respond promptly to requests for information or meetings.
- Agree the details of their complaint and their desired outcomes in a timely way if clarification is requested.
- Ask for assistance if or when needed.
- Treat everybody involved in their complaint and the complaints process with dignity and respect.
- Refrain from publicising the details of their complaint on social media and respect confidentiality.
- Refrain from making allegations and threats.

If the complainant fails or refuses to follow the above, the School may have to suspend its consideration of their complaint, either temporarily or permanently, depending on the nature of the complainant's behaviour and how this affects the School's handling of the complaint. In such circumstances, the School also reserves the right to invoke its Policy and Procedure for Managing Persistent and Vexatious Behaviour and Complaints (contained in Appendix 3).

#### **Investigator (if one is required or appointed)**

This could be the Headteacher or another member of the School's Senior Leadership Team. The Investigator's role is to establish the facts relevant to the complaint by:

- Providing a comprehensive, open, transparent and fair consideration of the complaint through:
  - Sensitive and thorough interviewing of the complainant to establish what has happened and who has been involved.
  - Interviewing any staff, children, young people or any other people relevant to the complaint.
  - Consideration of records and other relevant information.
  - Analysing information.
  - Referring to any relevant School policies and procedures that apply.
- Liaising with the complainant and the Complaints Co-ordinator as appropriate to try and identify how the complaint may best be resolved.

The Investigator should:

- Conduct interviews with an open mind and be prepared to persist in their questioning if they deem this necessary.
- Keep notes of interviews or arrange for an independent note taker to document the meeting.
- Ensure that any papers produced during the investigation are kept securely pending further consideration of the complaint.
- Be mindful of the timescales to respond.
- If the Investigator is somebody other than the Headteacher, then they should prepare a comprehensive report for the Headteacher or the Stage 2 Complaints Panel that sets out the facts, tries to identify solutions and makes recommendations to try and resolve the issues.

The Headteacher or Stage 2 Complaints Panel will then determine whether to uphold or reject the

complaint in full or in part and communicate their finding(s) to the complainant, providing the appropriate escalation details.

### **Complaints Co-ordinator**

This could be the Headteacher, a Designated Complaints Governor or a member of School staff providing administrative support.

The Complaints Co-ordinator should:

- Ensure that the complainant is updated at each stage of the School's complaints process.
- Liaise with staff members, the Headteacher, the Chair of Governors, the Clerk and any other relevant sources of information or support, to ensure a smooth and effective complaints process.
- Remain mindful of issues regarding:
  - Sharing third party information.
  - Additional support. This may be needed, for example, by complainants when making a complaint, including an Interpreter or where the complainant is a child or young person.
- Keep accurate records and store them securely.

### **Clerk to the Governing Body**

The Clerk is the point of contact for the complainant, the respondent on behalf of the School and the Stage 2 Complaints Panel. They should:

- Ensure that everybody involved in the complaints process is aware of their legal rights and responsibilities, including any under legislation relating to School complaints, education law, the Equality Act 2010, the Freedom of Information Act 2000, the Data Protection Act (DPA) 2018 and the General Data Protection Regulations (GDPR).
- Set the date, time and venue of the meeting, ensuring that the dates are convenient to all parties if they are invited to attend (unless three proposed dates have been declined without good reason in which case the Clerk or the Chair of Governors will decide when the Hearing will be). They should also ensure that the venue and proceedings are accessible for all attendees.
- Collate any written material relevant to the complaint (for example; the Stage 1 paperwork, the respondent on behalf of the School's submission, the complainant's submission and signed, dated witness statements) and send it to all parties in advance of the meeting within an agreed timescale (including the Panel).
- Take detailed notes of the Stage 2 Complaints Panel Hearing.
- Provide a copy of their detailed notes to either or both parties if requested to do so.
- Notify both parties of the Panel's findings.

### **Chair of the Stage 2 Complaints Panel**

The Chair of the Stage 2 Complaints Panel will be appointed in advance of the Hearing and should ensure that:

- Both parties are asked (via the Clerk) to provide any additional information relating to the complaint by a specified date in advance of the Hearing.
- The Hearing is conducted fairly and impartially, is not adversarial, and that, if all parties are invited to attend, everyone is treated with respect and courtesy.
- Complainants who may not be used to attending such Hearings are put at ease insofar as possible. This is particularly important if the complainant is a child or young person.
- The remit of the Complaints Panel is explained to both parties.
- Written material is seen by everyone in attendance, provided it does not breach confidentiality or any individual's rights to privacy under the DPA 2018 or GDPR.
- If a new issue arises, it would be useful to give everyone the opportunity to consider it and comment upon it. This may require an adjournment of the Hearing. New issues would need to be passed back for consideration at Stage 1 first.

- Both the complainant and the respondent on behalf of the School are given the opportunity to put forward their case and seek clarity, either through written submissions ahead of the Hearing or verbally in the Hearing itself.
- No cross questioning is permitted. All questioning is conducted by the Panel.
- The issues are addressed.
- Key findings of fact are made.
- The Panel is open-minded and acts independently.
- No member of the Panel has an external interest in the outcome of the proceedings or has had any involvement at an earlier stage of the complaints process.
- The Clerk takes detailed notes of the Hearing.
- They liaise with the Clerk whenever the need arises (and the Complaints Co-ordinator, if the School has one).

### **Stage 2 Complaints Panel Member**

Stage 2 Complaints Panel Members should remain mindful that:

- The Hearing must be independent and impartial and should be seen to be so.
- No Governor may sit on the Panel if they have had prior involvement in the complaint or in the circumstances surrounding it.
- The aim of the Hearing should be to try and resolve the complaint and achieve reconciliation between the School and the complainant wherever possible.
- The complainant may not be satisfied with the outcome if the Panel does not find in their favour. It may only be possible to establish the facts and make recommendations.
- Many complainants will feel nervous in a formal setting such as this.
- Parents and carers often feel emotional when discussing issues that affect their children.
- Extra care needs to be taken if the complainant is a child or young person and they are present during all or part of the Hearing.
- Careful consideration of the atmosphere and proceedings should be given to ensure that a child or young person does not feel intimidated.
- The Panel should respect the views of a child or young person and give them equal consideration to those of adults.
- If a child or young person is the complainant, the Panel should ask them in advance if any support is needed to help them present their complaint.
- Where a child or young person's parent or carer is the complainant, the Panel should give them the opportunity to say which parts of the meeting, if any, the child or young person would like to be present for.
- The complainant should be advised that it may not be agreed for a child or young person to attend a Hearing if the Panel considers that it is not in the child or young person's best interests.
- The welfare and best interests of the child or young person should remain at the forefront at all times.

### Formal Complaint Form

**A request to escalate to Stage 2 must be made to the Chair of Governors, using the official form (Appendix A) and emailed to [Chairofgovs@ashwell.herts.sch.uk](mailto:Chairofgovs@ashwell.herts.sch.uk), within 10 school days of receipt of the Stage 1 response.**

Name		
Address		
Post Code		
Email Address		
Telephone Number	Day	
	Evening	
	Mobile	
What is it you want to complain about?		
Have you raised your issue with the Class Teacher (informal stage) If so, when did you do this?	Yes (inc. date)	No
Have you complained to the Headteacher (Stage 1)?	Yes (inc. date)	No
What happened when you complained to the Headteacher?		



What are your desired outcomes?	
Are you attaching any paperwork? If so, please give details.	

<b>Signature:</b>
<b>Date:</b>
<b>Official use</b>
<b>Date acknowledgement sent:</b>
<b>By who:</b>
<b>Complaint referred to:</b>
<b>Date:</b>

**Ashwell School**  
**Policy and Procedure for Managing Persistent and Vexatious Behaviour and Complaints**

Ashwell School is committed to dealing with all complaints fairly and impartially and in accordance with the complaints policy and procedure that the Governing Body has adopted.

The School will not normally limit the amount of contact that parents, carers or complainants have with us; however, the School does not expect its staff to tolerate unreasonable behaviour and we will take decisive action to protect staff from such behaviour, including any that the School deems to be abusive, offensive or threatening.

Ashwell School defines unreasonable behaviour as that which affects the smooth and efficient running of the School on a daily basis, or that which hinders the School's consideration of complaints because of the frequency or nature of the complainant's contact with the School, such as, if the complainant:

- Refuses to articulate their complaint or specify the grounds of a complaint or the outcomes sought by raising the complaint, despite offers of assistance.
- Refuses to co-operate with the complaints process at any stage.
- Refuses to accept that certain issues are not within the scope of the complaints process.
- Insists on the complaint being dealt with in ways which are incompatible with the complaints process or with good practice, or only in a way that suits themselves.
- Introduces trivial or irrelevant information that they expect to be taken into account and commented upon.
- Raises detailed but unimportant questions and insists they are answered fully, often immediately and to their own timescales.
- Makes unfounded complaints about staff who are trying to deal with the issues and seeks to have them replaced.
- Seeks to change the basis of some or all of the complaint as the complaints process proceeds.
- Repeatedly makes the same complaint(s) (despite previous investigations or responses concluding that the complaint is unfounded or has been fully addressed).
- Refuses to accept the outcome of the complaints process despite the fact that the process has been exhausted and correctly implemented, including signposting the complainant to the Department for Education (DFE).
- Seeks an unrealistic outcome.
- Makes excessive demands on School time by way of frequent, lengthy, complicated and stressful contact(s) with staff regarding the complaint, in person, in writing, by email and by telephone whilst the complaint is being dealt with.
- Uses threats to intimidate.
- Uses abusive, offensive or discriminatory language or violence.
- Makes and breaks contact with the School on an ongoing basis with varying time delays in between.
- Knowingly provides false information.
- Persistently approaches various individuals at the School, as well as the Local Authority, Ofsted and the Department for Education, etc, through different routes about the same issue(s) in the hope of eliciting different responses.
- Publishes what the School deems to be inappropriate or unacceptable information on social media or other platforms.

Complainants should try to limit their communication with the School where it relates to their complaint, whilst the complaint is being progressed through the complaints process. It is unhelpful

and unnecessary if repeated correspondence is sent (either by letter, phone, email or text), as it could delay the outcome(s) being finalised.

Wherever possible, the Headteacher or Chair of Governors will discuss any concerns with the Complainant/Parent/Carer about their behaviour informally before deciding to invoke this policy and procedure for managing persistent and vexatious behaviour and complaints.

If any unreasonable behaviour continues after the Headteacher or Chair of Governors has spoken informally with the Complainant/Parent/Carer, the Headteacher will write to them. The Headteacher will confirm that the School deems their behaviour to be persistent and/or vexatious and will ask them to stop behaving in this way.

Wherever Complainants/Parents/Carers continue to contact Ashwell School excessively, causing a significant level of disruption, the School will consider whether to impose some or all of the following communication restrictions and confirm this in writing accordingly:

- Requesting that contact only takes place in a particular form (e.g. letters only).
- Requiring contact to take place with a designated member of Staff (e.g. the Headteacher).
- Restricting telephone calls to specified days and times.
- Asking the complainant to enter into an agreement about their future contact with the School.
- Informing the complainant that if they do not follow this advice (as stated above), any further communication/correspondence that does not present significant new matters or new information will only be kept on file and will not be acknowledged or responded to.
- If the complainant tries to re-open an issue that has already been considered through the complaints process, the Chair of Governors will inform them in writing that the process has been exhausted, that the matter is now closed, and that the School will not enter into any further correspondence about it.

The decision of the Headteacher or Chair of Governors to invoke this policy and procedure (and any communication restrictions imposed as a result) is final and cannot be challenged or overturned through the School's complaints process. This is because the decision will be reviewed by the Headteacher or Chair of Governors after six months. If the Complainant/Parent/Carer's behaviour has remained the same or worsened, the Headteacher or Chair of Governors reserves the right to extend the communication restrictions for a further six months each time they review the situation. If the Complainant/Parent/Carer's behaviour has improved to a level that the School deems acceptable, then communication restrictions will be lifted on the proviso that should matters regress, the School reserves the right to reinstate the communication restrictions that previously applied.

In response to any serious incident of aggression or violence, Ashwell School will immediately inform the Police and communicate our actions in writing. This may include barring the individual(s) from the School premises. Should the School deem this necessary, it will ensure that it adheres to the guidance issued by the Department for Education (DFE) entitled [Controlling access to School premises](#).

The School also reserves the right to use and adapt this policy and procedure whenever it deems it appropriate to manage unreasonable or persistent contact not directly associated with, or resulting from, formal complaints.